

# Steorā<sup>®</sup>

T H E   S M A R T   B E N C H



# A new generation street bench

Global environmental circumstances call for concrete steps toward change in behaviour of urban citizens. Cities are overcrowded, and renewable energy and environmental protection have become the key economic and social challenges.

Street furniture is a simple entry point to a world of smart cities. A relatively simple looking product, but with vast usage potential, a solar powered bench comes with multiple functionalities – a wireless charging pad and charging ports for wired phones and other smart devices, night illumination, energy saving main controller, data collecting etc.

Our smart bench has in-built sensors for data collection and analysis, gathering information on, for example, the number of bench users, operability of various components, and atmospheric conditions. Additionally, bench owners can easily change settings on the dashboard.

With its simple design and convenient size, Steora can be installed anywhere, outdoors and indoors.

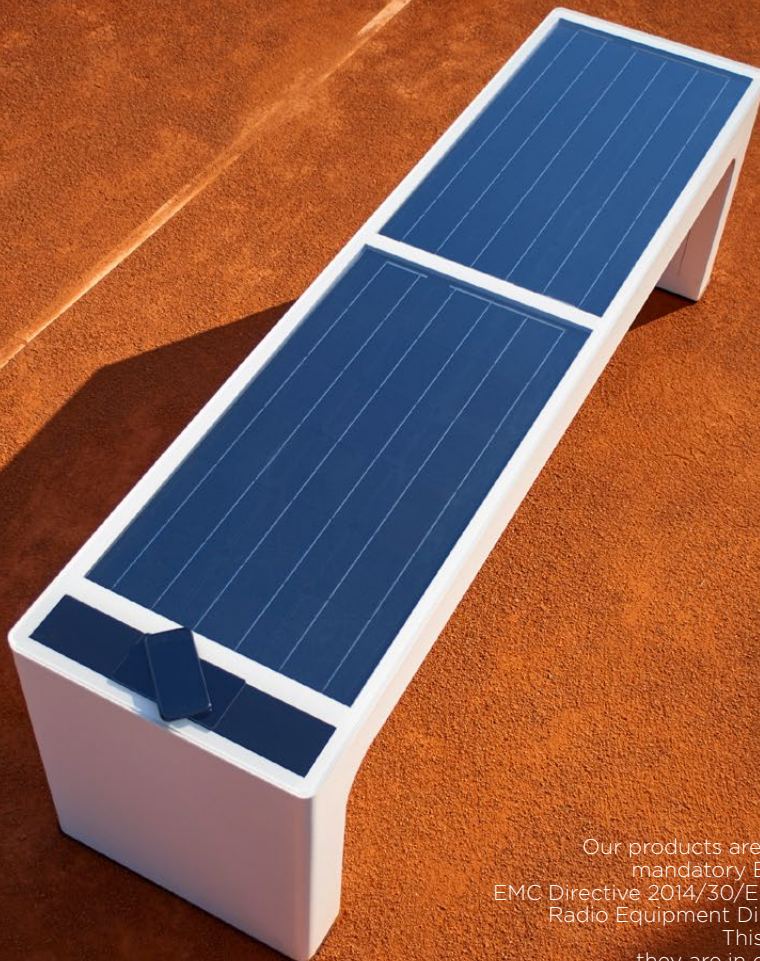




# Why Steora?

Overall usage experience and feedback will serve as the basis for future development of smart solutions for digitalization in sustainable environments. Therefore, Steora is a perfect and unique Internet of Things (IoT) product for smart environments or smart cities.

When resolving the challenges of sustainability, we focus on the nexus between people, technology, and urban design. In order to facilitate the implementation of strategic enhancements to civic spaces for better living, we have created Steora, the most ingenious smart bench ever designed.



Our products are in accordance with mandatory European directives: EMC Directive 2014/30/EU, LVD 2014/35/EU, Radio Equipment Directive 2014/53/EU.

This is a guarantee that they are in compliance with CE, and therefore completely safe for outdoor usage.

# Steora STANDARD

## Simplicity at its best

Steora Standard is the smart bench of choice in the world. It is designed for outdoor spaces exposed to plenty of sunlight, such as city squares, marinas or parks.

Steora Standard is 100% solar powered, and does not require any additional power supply or infrastructural changes.

The controller is specially developed to produce up to 30% more energy. In winter days, it monitors weather conditions and powers off the bench in case of bad weather.

With its simple, balanced design and convenient size, Steora can be installed to substitute regular street benches, bringing a touch of modern aesthetic to outdoor spaces together with solar-powered Wi-Fi hotspot and charging stations.

Lead production time: **7 - 14 days**

Minimum order: **1**

Available colors:



**Signal  
White**



**On request**



### Construction

Dimensions: W: 178 cm; D: 45 cm; H: 50 cm. Weight: 88 kg



### Photovoltaic modules

Monocrystalline / Total power: 110 W



### Battery pack

Type: AGM / Capacity: 72 Ah



### USB charging

Number of ports: 2

Power (per port): 5 W (1A)

Other: short circuit protection, LED light



### Wireless charging

Power: 10 W / Efficiency: up to 70%



### Internet technology

4G LTE / Speed: up to 150 Mbps / Range: 4 - 20 meters

Other: custom SSID, user and web page restriction, custom homepage...



### Sensors

Temperature (-45 °C, + 60 °C)

Humidity (0% - 100%)

Device charging counters (cable and wireless)

Energy production & consumption

Internet connections counter & data traffic usage

Battery status

Rain sensor - powers the bench off in case of heavy rain

System sensor - analyses every device inside the bench



### Cooling system

Type: air cooling / Number of fans: 4

Air flow: 370 m³/h

Temperature trigger: 35°C



### Ambient light

Range: 2 meters

Color: White





Steorá



# Steora HYBRID

## Feel the power

Steora Hybrid is a powerful model which includes all the functionalities of Steora Standard with an addition of integrated AC charging module.

It is mainly designed for use in countries with less sunlight during winter days. Combining the energy from solar panels and AC grid power, the bench retains all its functions throughout all the seasons, adapting to outside conditions.

Grid power is mostly used during lower insolation days. When the solar battery charge drops below 30%, AC module switches on to quickly recharge the battery system.

Since it can draw power from the AC grid, Steora Hybrid offers additional features such as seat heating, or powering other devices in its vicinity.

Lead production time: **7 - 14 days**

Minimum order: **1**

Available colors:



**Signal  
White**



**On request**



### Construction

Dimensions: W: 178 cm; D: 45 cm; H: 50 cm. Weight: 88 kg



### Photovoltaic modules

Monocrystalline / Total power: 110 W



### Battery pack

Type: AGM / Capacity: 72 Ah



### USB charging

Number of ports: 2

Power (per port): 5W (1A)

Other: short circuit protection, LED light



### Wireless charging

Power: 10 W / Efficiency: up to 70%



### Internet technology

4G LTE / Speed: up to 150 Mbps / Range: 4 – 20 meters

Other: custom SSID, user and web page restriction, custom homepage...



### Sensors

Temperature (-45 °C, + 60 °C)

Humidity (0% – 100%)

Device charging counters (cable and wireless)

Energy production & consumption

Internet connections counter & data traffic usage

Battery status

Rain sensor - powers the bench off in case of heavy rain

System sensor - analyses every device inside the bench



### Cooling system

Type: air cooling / Number of fans: 4

Air flow: 370 m³/h

Temperature trigger: 35 °C



### Ambient light

Range: 2 meters

Color: White



### AC grid connector

Supply voltage: 230V AC

Power: 150 W





# Steora URBAN

## The future - now

Steora Urban is the first street bench ever with a built-in LCD display.

Since it is designed to employ both solar power and AC grid power, Steora Urban is a perfect fit for low-light locations, and indoor usage in highly frequented areas.

19" LCD display on Steora Urban can be used for broadcasting city news, announcements, pictures, or any piece of information of public interest.

Using our advanced software with simple user interface (UI), users can easily upload various content, and set parameters for duration and frequency for each bench.

Steora Urban requires AC grid power for 24/7 operation.

Lead production time: **up to 30 days**

**1**

Minimum order:

Available colors:



**Signal  
White**



**On request**



### Construction

Dimensions: W: 178 cm; D: 45 cm; H: 50 cm. Weight: 88 kg



### Photovoltaic modules

Monocrystalline / Total power: 110 W



### Battery pack

Type: AGM / Capacity: 72 Ah



### USB charging

Numero porti: 2

Number of ports: 2 / Power (per port): 5W (1A)

Other: short circuit protection, LED light



### Wireless charging

Power: 10 W / Efficiency: up to 70%



### Internet technology

4G LTE / Speed: up to 150Mbps / Range: 4 - 20 meters

Other: custom SSID, user and web page restriction, custom homepage...



### Sensors

Temperature (-45 °C, + 60 °C)

Humidity (0% - 100%)

Device charging counters (cable and wireless)

Energy production & consumption

Internet connections counter & data traffic usage

Battery status

Rain sensor -powers the bench off in case of heavy rain

System sensor - analyses every device inside the bench



### Cooling system

Type: air cooling / Number of fans: 4

Air flow: 370 m³/h / Temperature trigger: 35 °C



### Ambient light

Range: 2 meters / Color: White



### AC grid connector

Supply voltage: 230V AC / Power: 150 W



### LCD Display

Size 19" / 250 cd/sqm





Clear throughout the day.

● 12.5°C

Precipitation: 0 %  
Max.: 12.7 °C  
Wind: 12 km/h  
Visibility: 10 km  
Humidity: 67 %

THU

● 18°C

Mostly cloudy  
starting in the  
evening.

Min.: 14 °C  
Precip.: 0 %  
Wind: 3 km/h

FRI

● 16°C

Mostly cloudy  
with rain.

Min.: 11 °C  
Precip.: 20 %  
Wind: 10 km/h

SAT

● 17°C

Partly cloudy  
starting in the  
afternoon.

Min.: 10 °C  
Precip.: 3 %  
Wind: 2 km/h

Steora.com

# Steora URBAN+

## The world within reach

Steora Urban+ is the most advanced street bench in the world. It is designed for use in highly frequented areas such as city streets, squares and other buzzing locations.

The signature feature of Steora Urban+ is the 19" super-bright LCD display, which can be used for showing ads, videos, pictures, or various information to the public (e.g. weather report).

Thanks to advanced software, users can easily upload videos or pictures to benches of their choice, and set campaign duration and frequency.

Video campaigns can also be connected to a Wi-Fi homepage, allowing bench users to view the same campaign on their smartphones.

Steora Urban+ requires AC grid power for 24/7 operation.

Lead production time: **up to 90 days**

**1**

Minimum order:

Available colors:



**Signal  
White**



**On request**



### Construction

Dimensions: W: 178 cm; D: 45 cm; H: 50 cm. Weight: 88 kg



### Photovoltaic modules

Monocrystalline / Total power: 110 W



### Battery pack

Type: AGM / Capacity: 72 Ah



### USB charging

Number of ports: 2 / Power (per port): 5W (1A)  
Other: short circuit protection, LED light



### Wireless charging

Power: 10 W / Efficiency: up to 70%



### Internet technology

4G LTE / Speed: up to 150 Mbps / Range: 4 - 20 meters  
Other: custom SSID, user and web page restriction, custom homepage...



### Sensors

Temperature (-45 °C, + 60 °C)  
Humidity (0% - 100%)  
Device charging counters (cable and wireless)  
Energy production & consumption  
Internet connections counter & data traffic usage  
Battery status  
Rain sensor - powers the bench off in case of heavy rain  
System sensor - analyses every device inside the bench



### Cooling system

Type: air cooling / Number of fans: 4  
Air flow: 370 m³/h / Temperature trigger: 35 °C



### Ambient light

Range: 2 meters / Color: White



### AC grid connector

Supply voltage: 230 V AC / Power: 150 W



### Camera

Night recording: Yes



### Super-bright display

Size 19" / 1000 cd/sqm





# Steora CCTV

## The future of urban security

Steora CCTV is developed to improve the safety of public spaces.

Combining smart tech for safer environments, it is intended for all locations which call for a higher level of security and public surveillance. Steora CCTV is equipped with 4 cameras, one on each side of the bench, creating 360° live stream.

The cameras also have night recording function with integrated infrared light.

Live stream is then available online, as well as an API for integration in any other website, or for recording on the NVR.

The bench is weather-resistant and vandal-resistant. Steora CCTV requires AC grid power for 24/7 operation.

Options for configuring Steora CCTV bench:

1. Access to live streaming and recordings through the Dashboard (Ethernet or optic fibre connection) + HDD storage inside the bench
2. Live stream exclusively through the Dashboard, no video storage on HDD (there is no HDD inside the bench)
3. Video material is stored on HDD inside the bench, no access to the recorded material or live stream through the Dashboard

Lead production time: **up to 60 days**

**1**

Minimum order:

Available colors:



**Signal  
White**



**On request**



### Construction

Dimensions: W: 178 cm; D: 45 cm; H: 50 cm. Weight: 88 kg



### Photovoltaic modules

Monocrystalline / Total power: 110 W



### Battery pack

Type: AGM / Capacity: 72 Ah



### USB charging

Number of ports: 2

Power (per port): 5 W (1A)

Other: short circuit protection, LED light



### Wireless charging

Power: 10 W / Efficiency: up to 70%



### Internet technology

4G LTE / Speed: up to 150 Mbps / Range: 4 - 20 meters

Other: custom SSID, user and web page restriction, custom homepage...



### Sensors

Temperature (-45°C, + 60°C)

Humidity (0% - 100%)

Device charging counters (cable and wireless)

Energy production & consumption

Internet connections counter & data traffic usage

Battery status

Rain sensor - powers the bench off in case of heavy rain

System sensor - analyses every device inside the bench



### Cooling system

Type: air cooling / Number of fans: 4

Air flow: 370 m³/h

Temperature trigger: 35 °C



### Ambient light

Range: 2 meters

Color: White



### AC grid connector

Supply voltage: 230 V AC

Power: 150 W



### Camera

Night recording: Yes

Angle: 360°

## DASHBOARD

Home

Steora

CCTV

Insolation

Advertising



Welcome,  
ivanmrvo  
hr | en | es | de | it | fr

Bench ID

1040

1042

1056

1057

1058

1059

1065

1069

1171

1372

1191

1372

1384

1528

Location  
Bench owner  
Is Active

Solin  
Include  


Temperature: 27.8 °C  
Humidity: 52,9 %



Recorded Events

View Camera Info



Recorded Events

View Camera Info



Recorded Events

View Camera Info



Recorded Events

View Camera Info

OFFLINE  
CHAT

# Steora E

## Power up & connect

Steora E is the only bench in Steora family without PV modules.

It is designed for indoor usage at highly frequented locations such as transit stations (bus stops, metro or train stations), shopping centers or airports.

Steora E offers the same functionalities as Steora Standard model.

Elegant design of the seating plate is achieved by combining black acrylic glass cover with integrated wireless charger.

Steora E requires AC grid power for 24/7 operation.

Lead production time: **7 - 14 days**

Minimum order: **1**

Available colors:



**Signal  
White**



**On request**



### Construction

Dimensions: W: 178 cm; D: 45 cm; H: 50 cm. Weight: 58 kg



### USB charging

Number of ports: 2

Power (per port): 5 W (1A)

Other: short circuit protection, LED light



### Wireless charging

Power: 10 W / Efficiency: up to 70%



### Internet technology

4G LTE / Speed: up to 150 Mbps / Range: 4 - 20 meters

Other: custom SSID, user and web page restriction, custom homepage...



### Sensors

Temperature (-45 °C, + 60 °C)

Humidity (0% - 100%)

Device charging counters (cable and wireless)

Energy consumption

Internet connections counter & data traffic usage

System sensor - analyses every device inside the bench



### Cooling system

Type: air cooling / Number of fans: 4

Air flow: 370 m³/h

Temperature trigger: 35 °C



### Ambient light

Range: 2 meters

Color: White



### AC grid connector

Supply voltage: 230 V AC

Power: 150 W





# 24/7 Dashboard

Steora's dashboard is actually the brain of the bench.

Once they purchase Steora, our customers get their personal profile on Include's web based dashboard. At any time, from any location, Steora owners can get fresh data feed from their benches to learn about their current status. This is a feature that makes Steora smart bench more advanced than any other similar product on the market.

The dashboard performs the following functions:

- overview of all locations where Steora benches are installed,
- reporting information on the number of charged devices,
- the number of Wi-Fi users and their internet consumption,
- remote control of internet access (including changing passwords),
- remote control of ambient lights and charging signal lights (including setting times to turn the lights on and off automatically),
- and providing weather info like a mini meteorological station (measuring humidity, temperature, and precipitation in the area).



## DASHBOARD

Home

Buyers

Benches

Insolation

Advertising

Bench ID

1040

1042

1056

1057

1058

1059

1065

1069

1171

1372

1191

1372

1384

1528

Location  
Bench owner  
Is Active

Solin  
Include



Temperature: 27.8 °C  
Humidity: 52.9 %

### Usage summary

Select date  
range:

From



To



2.984

Solar produced  
kWh



2.225

Consumed kWh



306

USB charging



36

Wireless  
Charging



560

Wi-Fi users



13470

Internet data  
usage [MB]

Last Report: Oct 15, 2018 7:58:00

Select chart to show

☐ Solar power

☒ Weather

☒ Battery Voltage

☐ Battery status

☐ Internet user count

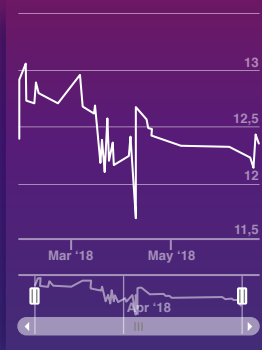
☐ Grid power

☒ Charging counter

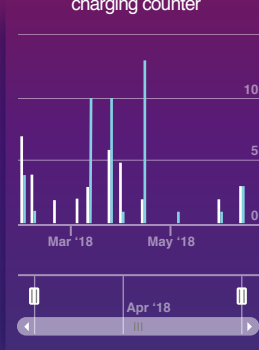
☐ Monthly usage



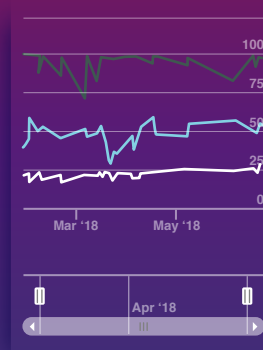
### Battery Voltage



### Usb and Wireless charging counter



### Weather



Welcome,  
ivanmrvosh

hr | en | es | de | it | fr

OFFLINE  
CHAT



# Additional options

## Extra wireless charger

Additional wireless charging pad with Qi wireless charging technology

Bench models: All

Minimum quantity: 1 pc

## Seat heating system

Heaters integrated in the seating plate able to raise temperature to 35°C

Bench models: All except Standard

Minimum quantity: 1 pc

## Optical fiber connection

Equipment inside the bench for connecting optical fiber cable

Bench models: All

Minimum quantity: 1 pc

## Sound system

Audiovisual reproduction system

Bench models: Urban, Urban+

Minimum quantity: 1 pc

## Bicycle rack

Single bike rack installed on demand

Bench models: All

Minimum quantity: 1 pc

## Radio system

DVBT stream radio stations with pre-defined frequency - motion sensor activation

Bench models: All

Minimum quantity: 1 pc





Steorā

Designed & Produced in EU

# Steora<sup>®</sup>

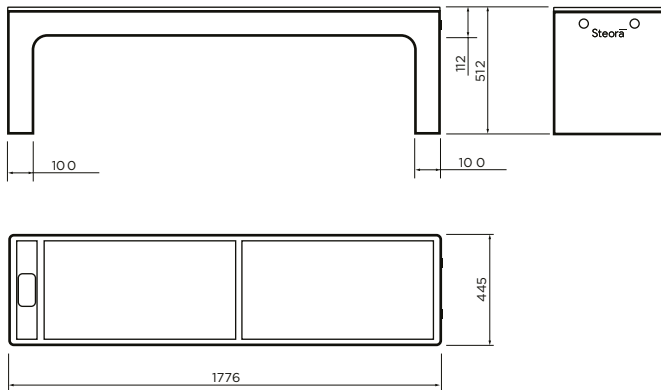
	Photovoltaic Modules	Battery pack	USB charging	Wireless Charging	Wi-fi Hotspot	Environmental Sensors	Cooling System	Ambient Light	AC grid connector	Camera	Display
STANDARD	●	●	●	●	●	●	●	●			
HYBRID	●	●	●	●	●	●	●	●	●		
URBAN	●	●	●	●	●	●	●	●	●		●
URBAN+	●	●	●	●	●	●	●	●	●	●	●
CCTV	●	●	●	●	●	●	●	●	●	●	
E			●	●	●	●	●	●	●		



For more info,  
please visit [include.eu](http://include.eu)  
or scan the QR code.



# FAQ



## How long does it take to fully charge a phone device?

Charging time depends on charging type and smartphone model. When using wireless charger, it usually takes up to 90 minutes to fully charge a device, as the technology is still in development phase. Charging speed when using USB ports is usually between 1 and 1.8% of battery per 1 minute. Charging speed also depends on whether the smartphone is in use while charging, or in the stand-by mode.

## What is the difference between Urban and Urban+ smart bench?

The main difference is in type and quality of display. Steora Urban+, has five times brighter display, and is meant for outdoor advertising; Steora Urban is a better fit for indoor advertising.

## How come the bench does not have a back rest?

Our bench was designed to fit seamlessly into any environment, and allow seating from all sides. A back rest would disrupt this concept and potentially create problems with charging since shadowing negatively affects the energy yield of PV modules.

## How many days can Steora work without sunlight?

This depends on several factors such as the number of bench users, amount of sun and clouds in the course of a day, etc. Usually, Steora can function normally up to 5 days without direct sun exposure, before the primary functions start to power off to save the battery. USB charging ports are the last to shut down.

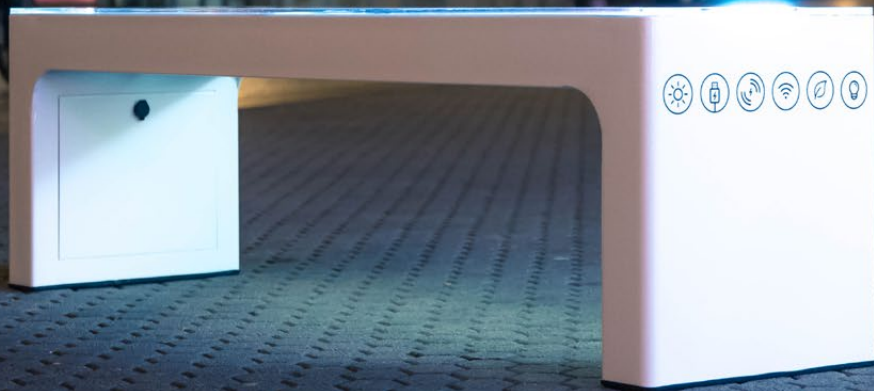
## How long does it take for a bench to be fully charged?

In summer days, Steora can charge its battery system within 1 day, while in winter this can take up to 10 days. That is why Steora is mostly in standby mode during winter (this refers only to Steora Standard, as all other models are AC grid connected and maintain full functionality throughout the year).

## What surface should the bench be installed on?

Steora has to be installed on a solid surface – concrete, asphalt or stone. The surface needs to be at least 10 cm deep. In case of Steora Standard, the bench location has to be directly exposed to sunshine.

We create amazing  
technology products.



# We are Include.

A European hardware company, founded by young innovator Ivan Mrvoš, we earned recognition following a large investment in 2017, quickly becoming one of the best producers of smart street furniture in Europe.

Based in Solin, Croatia, in a 2000 m<sup>2</sup> facility with 35 highly educated employees, we are recognized as a serious development IoT platform, growing rapidly in terms of company size, sales volume and global reach.

With global footprint of more than 800 benches on 40 markets around the world, we are involved in major 'Smart city' projects, and have made our presence known in 250 cities and municipalities across 5 continents.



Our highly skilled R&D team works on development of both hardware and software solutions, which in effect means we have the capability to develop any IoT, or solar powered solution for smart cities.

Our supply channels, in combination with production department, sales and customer care unit, can respond quickly and deliver even the most complex solutions of the highest quality to our customers.

We believe that technology is a driver of equality and inclusion. Our mission is to find undiscovered potential around us, and use it to create amazing technology products, designed to improve lives of urban users.



**Include Ltd.**

Kneza Trpimira 30  
21210 Solin, Croatia  
+385 21 413 213  
info@include.eu  
www.include.eu

